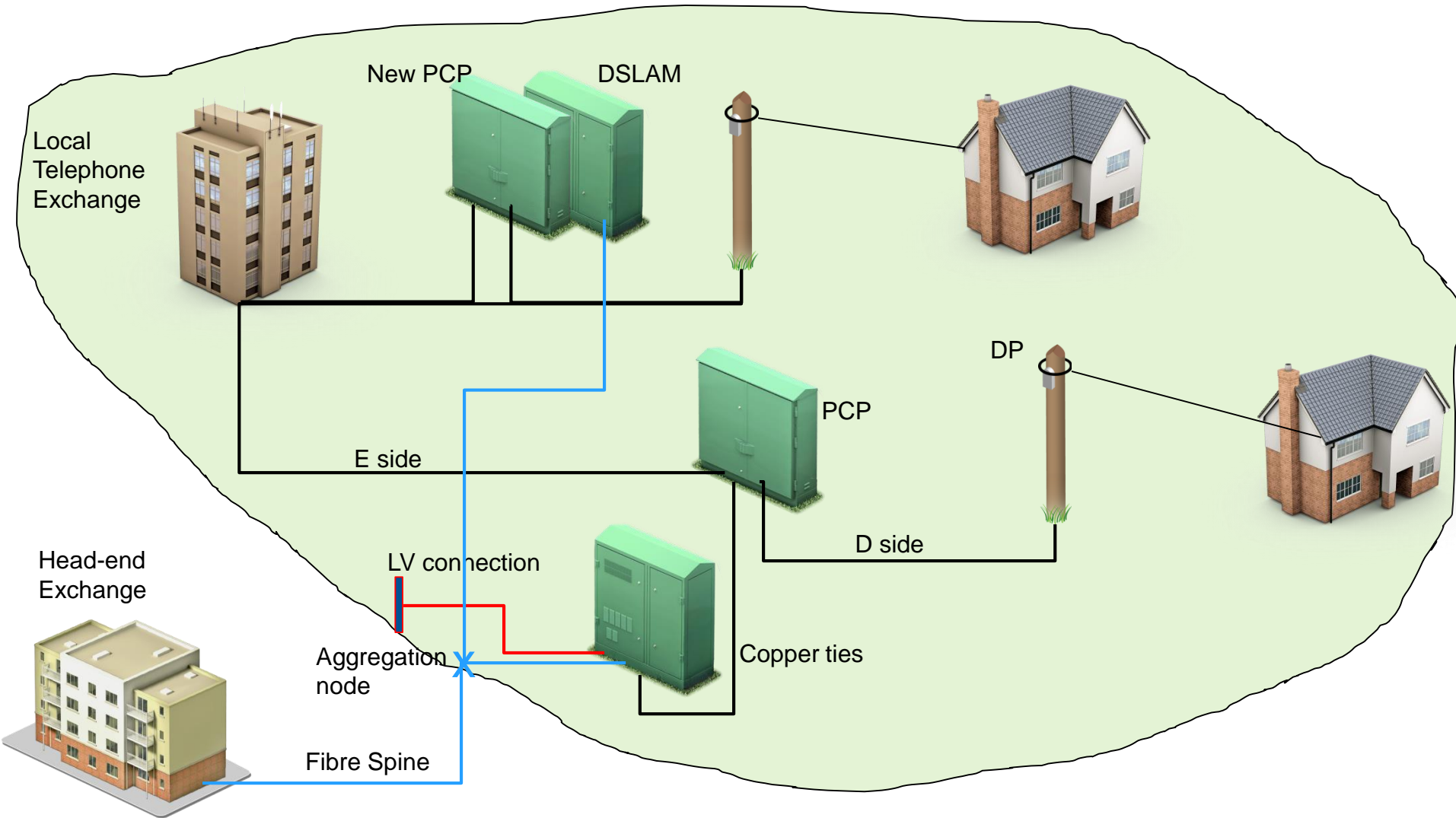


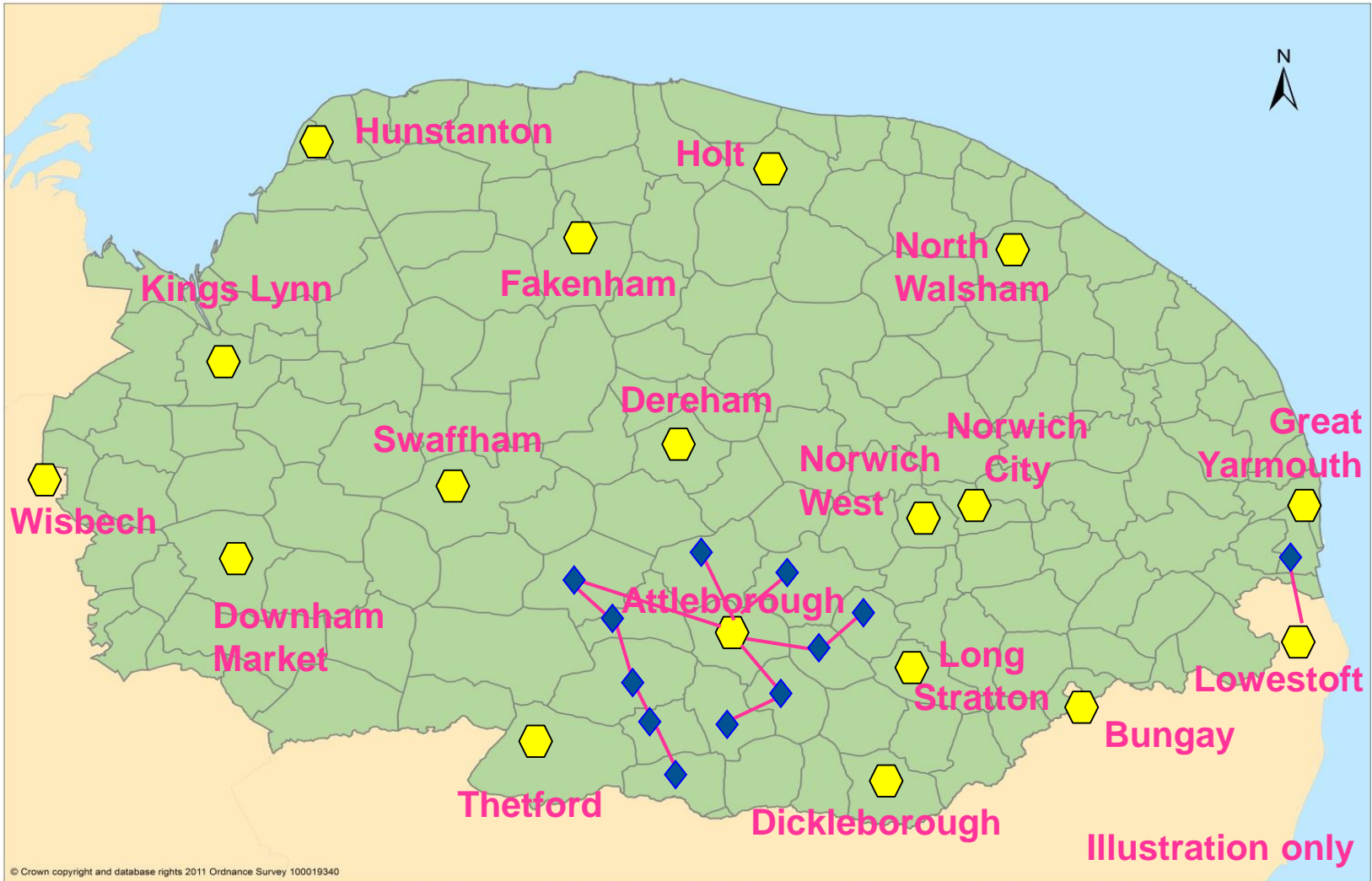
February 2015

Karen O'Kane - Better Broadband for Norfolk Programme Director

Network Architecture – FTTC (Fibre to the cabinet)



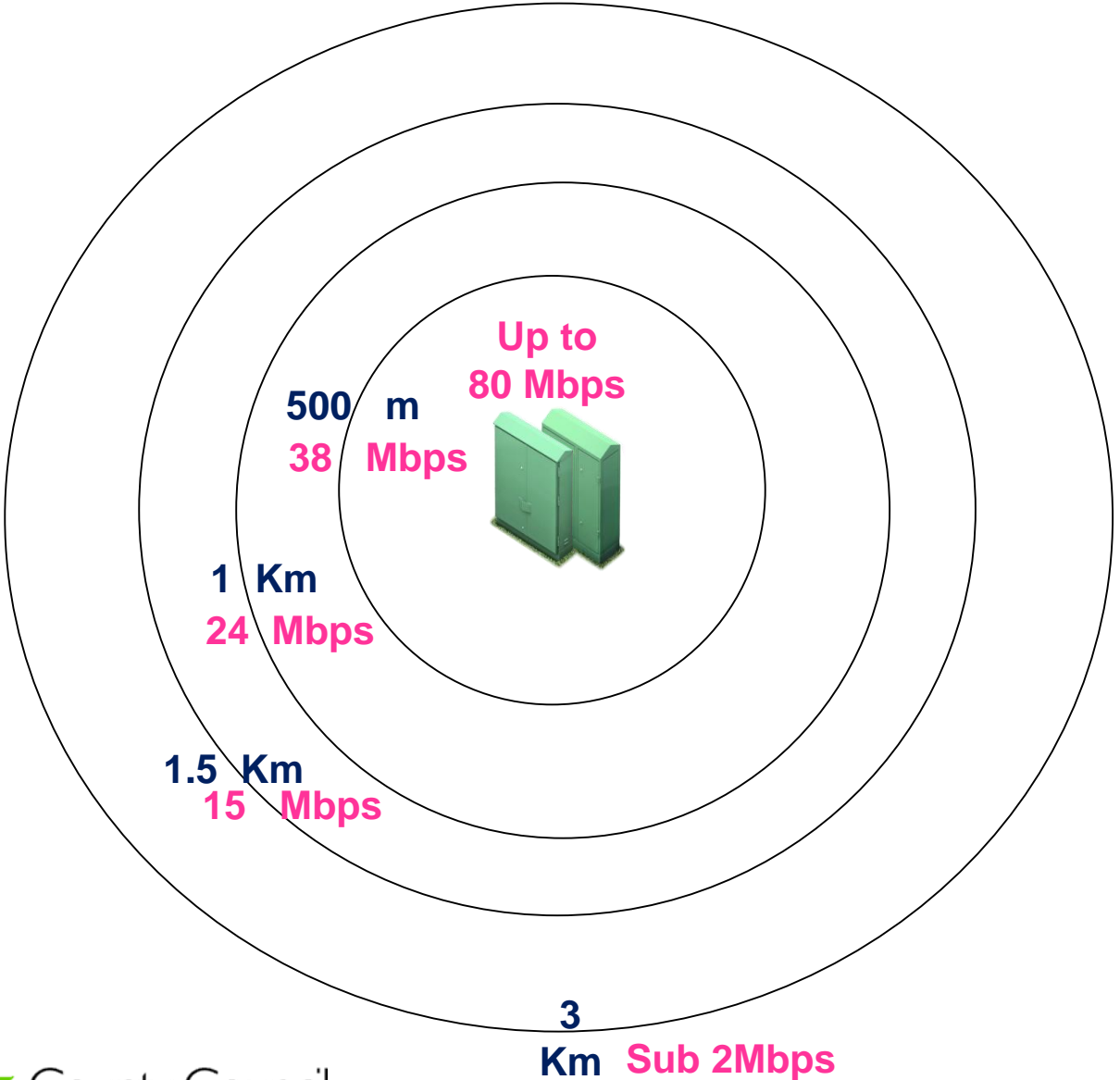
How do we ensure maximum coverage for the available investment



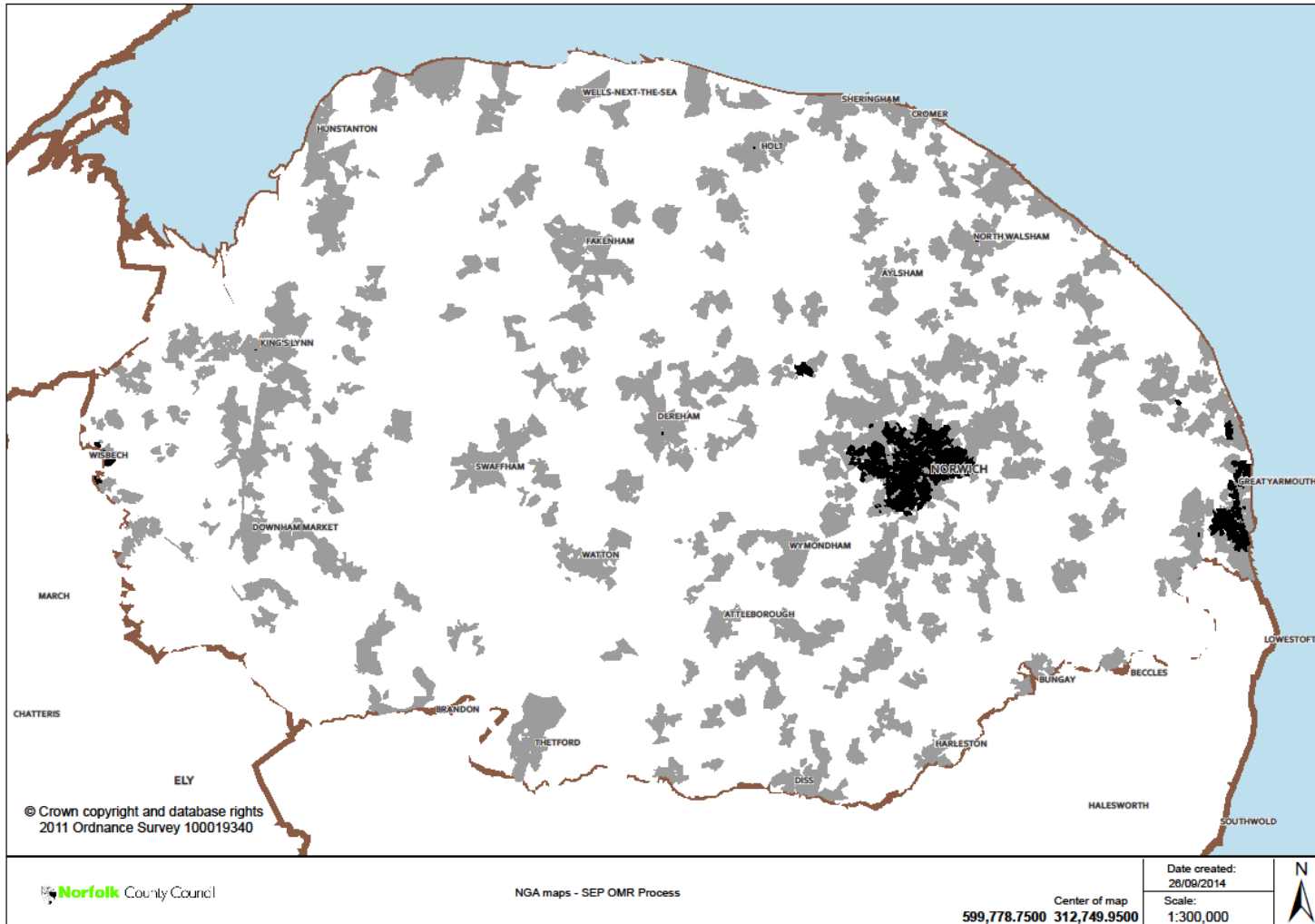
© Crown copyright and database rights 2011 Ordnance Survey 100019340

Illustration only

Distance from the cabinet influences speed



Expected coverage at the end of 2015, when BBfN1 is complete

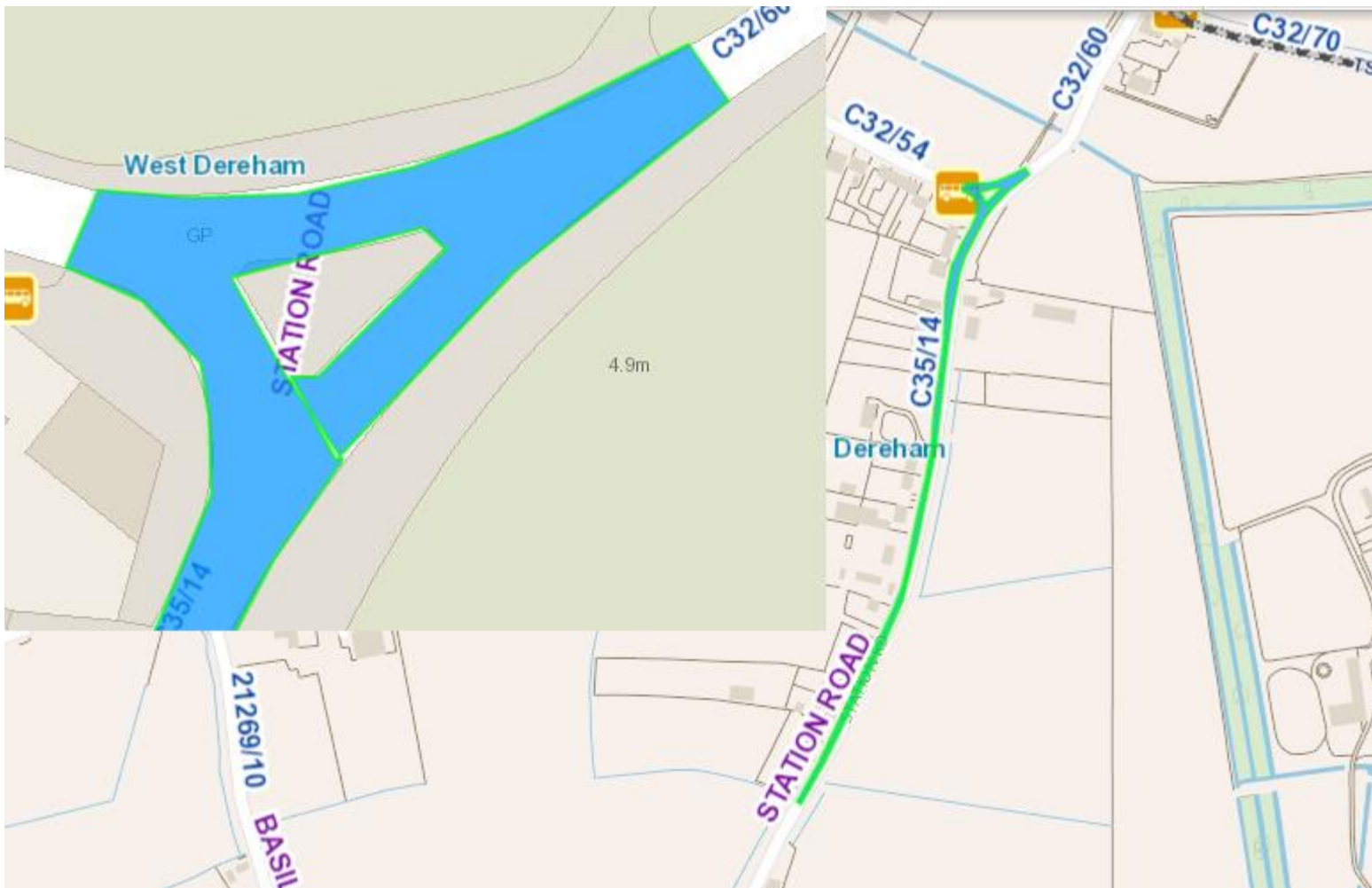


- Total 424,000 premises in Norfolk
- 357,000 premises will have access to fibre infrastructure via commercial and BBfN1 rollouts
- 67,000 remain without access to fibre infrastructure
- Of these, less than 10,000 will have speeds of less than 2Mbps

Expected coverage by District

	Total No. of premises in district or county	Commercial coverage	BBfN original contract coverage at completion	Combined commercial and BBfN original contract coverage	BBfN second contract coverage	Combined commercial and total BBfN coverage
Breckland	61,095	30%	49%	79%	9%	87%
Broadland	57,780	56%	30%	86%	6%	92%
Great Yarmouth	47,417	66%	27%	93%	1%	95%
King's Lynn and West Norfolk	73,993	29%	54%	83%	6%	89%
North Norfolk	56,112	11%	64%	74%	10%	85%
Norwich	69,343	93%	5%	98%	1%	99%
South Norfolk	58,860	15%	61%	75%	10%	86%
Norfolk total	424,600	43%	41%	84%	6%	90%

- Properties in West Dereham are mainly served from a secondary cabinet in the village which is connected via copper to a primary cabinet
- The primary cabinet (Stoke Ferry 4) is in Church Rd near the junction with Lynn Rd, Wereham
- The only way to achieve Superfast speeds is to convert the current secondary cabinet to become a new primary Stoke Ferry cabinet 8 and add a new fibre cabinet
- The location of the new cabinet is on the verge of Station Road, opposite the junction with Hilgay Road
- Section 58 restriction apply on this part of the highway



Work required

- Install 3 kilometres of fibre spine extension to West Dereham via West Dereham Road from Wereham
- Replace the current secondary cabinet
- Install a new fibre cabinet
- Power the new fibre cabinet

- Finally, Stoke Ferry cabinet 4 is ready but properties in Wereham and Crimplasham cannot have services until the new Stoke Ferry cabinet 8 is live



Department
for Culture
Media & Sport

Broadband
Delivery UK

betterbroadbandnorfolk.co.uk